

FORMAX®

HERE BEGINS YOUR ULTIMATE VALUE

FGS Series
Gravimetric Screw Doser

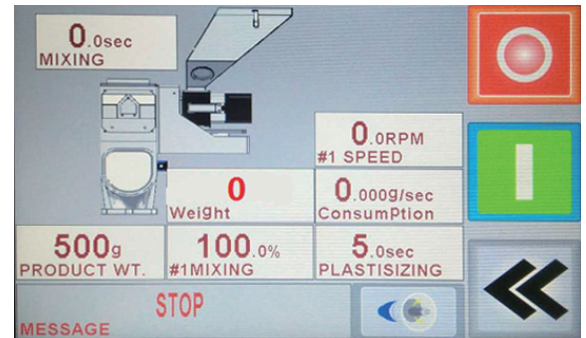
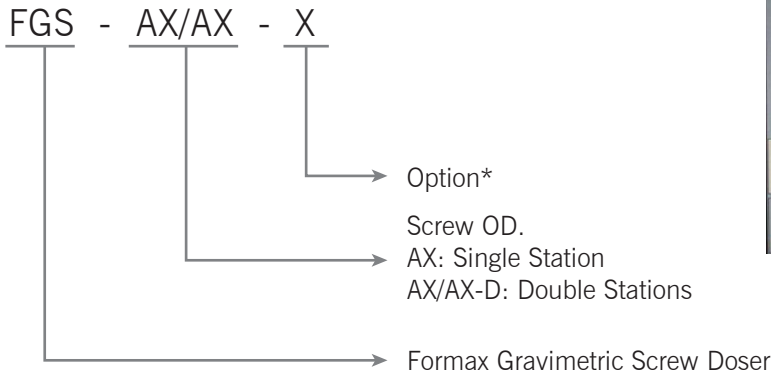
FGS-AX



Please read the brochure carefully before operation.

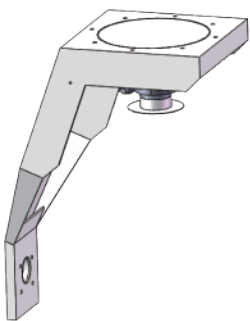
FGS Series Gravimetric Screw Doser

■ Coding Principle

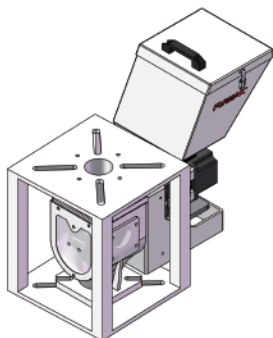


■ Features

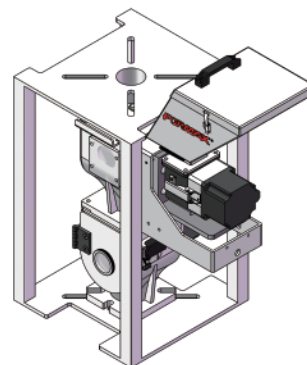
- Dosing screws are stainless steel for durability.
- Unit is comprised of standard modules for ease of cleaning disassembly and interchangeability.
- Standard base compounding bucket magnet to prevent damage to the molding machine screw
- Set manual cleaning valve for easy replacement of colorant
- Record the existing operation mode, no impact from power outage, resume operation after power restoration
- 100 recipes are available for permanent recording of material discharging time and finished products weight
- With weighing function, automatic calibration, automatic monitoring of the addition of colorant or additives
- With Ethernet communication function, it can transfer Cdata, record the amount of recycled materials and colorant on the same day and store it for later viewing.
- With chromatic aberration compensation can according to the proportion of recycled materials to adjust colorant or additives ration automatically
- The weight mixing technology is used to control the mixing process to meet extremely
- High production accuracy requirements
- Suitable for extruders in injection molding machine mode
- It can detect the colorant blockage caused overload, it will automatically stop for protection and alarm
- Motor failure will automatically stop and alarm



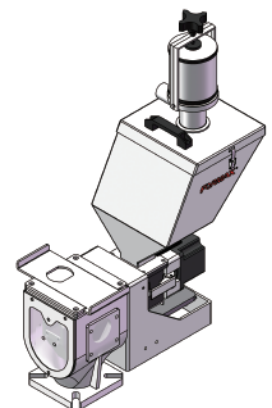
Support Bracket (optional)



Heavy Base (optional)



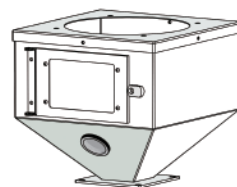
Heavy Base with Mixer (optional)



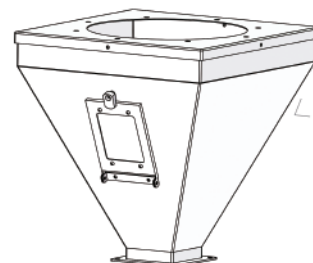
Venturi Loader (optional)

Options

- Optional positive venture loader for automatic filling
- HF heavy base is optional for using with FHD-100~FHD-400
- Optional main hopper to facilitate customer with double mixing needs
- Optional main hopper to facilitate customers to add main raw materials
- Optional 30mm diameter of screw for applications with large output



MIH-S18 (optional)



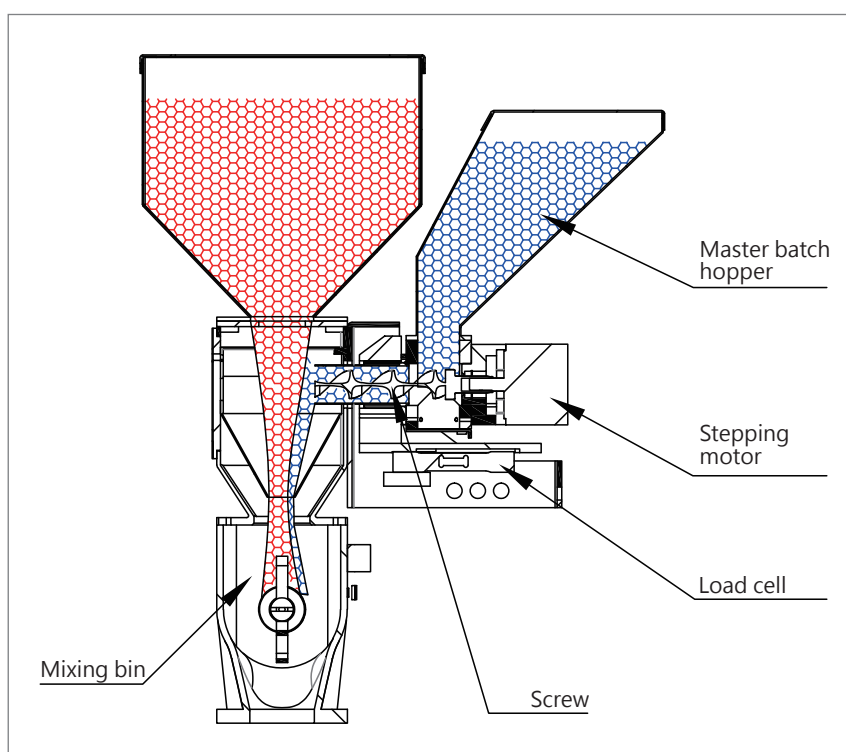
MIH-S24 (optional)

Application

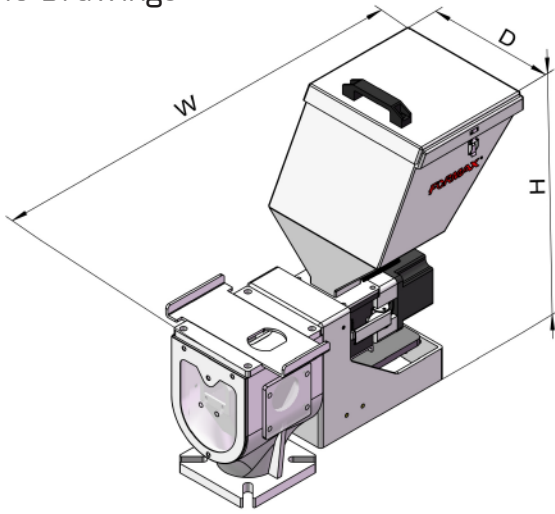
FGS series gravimetric screw dosers are suitable for auto-proportional mixing of virgin materials, regrinds, master batch or additives. A stepping motor with 0~200RPM is coupled to a dosing screw of A3, A10, A15, A20 or A30 to give a total of five models with output ranging from 0.2~50kg/hr. Double-color dosers are available for collocating with any two of single color dosers if required. Five components automatic mixing can be realized of customers adopt four-color dosers.

Working Principle

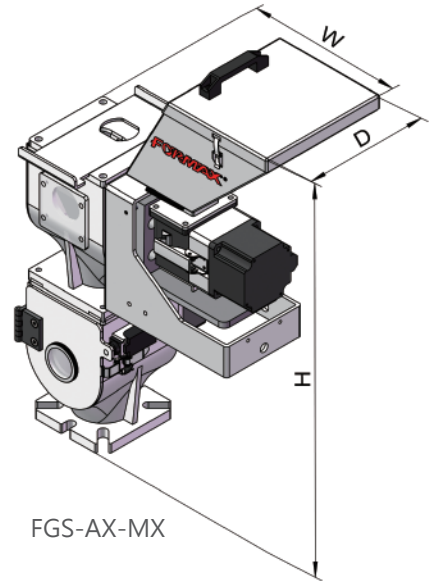
Signals from control cabinet are sent to motor, and then motor begins to work. The rotary force is transferred to the dosing screw through shaft connector. Color additives in hopper fall into the groove of conveying screw, then are taken to hopper base by rotating action of the screw.



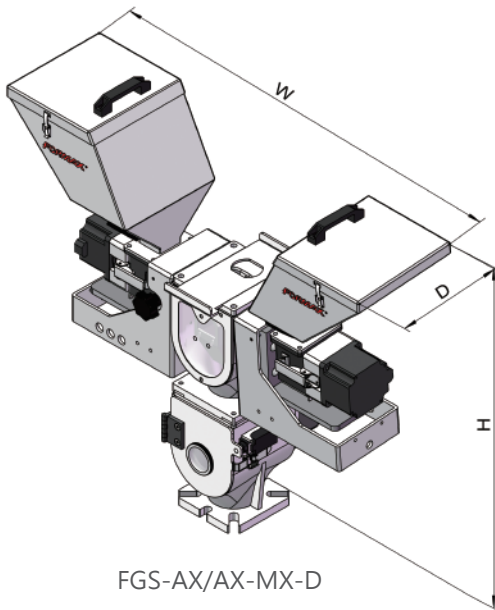
■ Outline Drawings



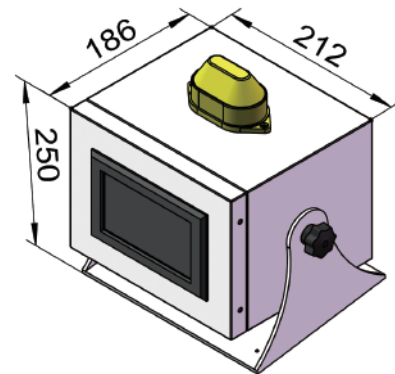
FGS-AX



FGS-AX-MX



FGS-AX/AX-MX-D



Controller

■ Specifications

| Model | | FGS-A3 | FGS-A10 | FGS-A15 | FGS-A20 | FGS-A30 | FGS-AX/AX-D | |
|-------------------------------|-------|--------------------------|---------|---------|---------|---------|--------------------------|--|
| Motor Power | kW | 0.2 | | | | | 0.2*2 | |
| Motor Speed | rpm | 1~200 | | | | | 1~200 | |
| Screw OD | mm | 20 | | | 30 | | 20/30 | |
| Sleeve ID | mm | 30 | | | 40 | | 30/40 | |
| Max. Output | kg/hr | 0.2~2 | 0.7~6 | 1~16 | 1.5~27 | 3.6~50 | Reference Left | |
| Master-batch Hopper Capacity | Ltr | 10 | | | | | | |
| Main Material Hopper Capacity | Ltr | (MIH18/24 as optional) | | | | | | |
| Mixing Motor Power | kW | 0.09 (optional) | | | | | | |
| Mixing Chamber Capacity | Ltr | 3L or (6L as optional) | | | | | | |
| Voltage | | 1Ø,220VAC · 50/60Hz | | | | | | |
| Outline Dimensions | | | | | | | | |
| W | mm | 480 | | | | | 820 | |
| D | | 210 | | | | | | |
| H | | 453 | | | | | | |
| Net Weight | kg | 30/35 (With Own Mixer) | | | | | 60/65 (With Own Mixer) | |

Note: 1) The output capacity depends on model selected, date of the single color doser can be a reference.

2) “**”The external diameter of screw is up to model selected.

3) For additional mixer, add “MX” at the end of model code.

4) All output capacities of above models are based on data from bulk density 0.65kg/L, dia. 2~3mm master batch in a test criteria of continuous running.

5) High torque stepping motor is for adding regrind/recycled materials.

Specifications are subject to change without prior notice.

FORMAX®

China
Formax Plastics Automation, Inc.

Dongguan
Xianxi New Industrial Zone, Xianxi Community,
Changan Town, Dongguan, Guangdong, China
Tel. +86-769-3899-9898 Fax. +86-769-8533-3467

Kushan
No.138-20, Hengshan Road, Kunshan, Jiangsu, China
Tel. +86-512-5700-8308 Fax. +86-512-5700-8306

Taiwan
Formax Equipment Inc.

7F-1, No.265, Nankang Road, Luchu Dist.,
Taoyuan City, Taiwan
Tel. +886-3-2121-725 Fax. +886-3-2127-960

www.formax88.com
www.formaxpa.com



All rights reserved.